

# GRADALL®

## 534D10-45

MATERIAL HANDLER

### SPECIFICATIONS



534D10-45

#### Performance

##### Rated Capacity

At 24" (610 mm) load center,  
10,000 lbs. (4,536 kg)

##### Maximum Lift Height

45 ft. (13.7 m)

##### Frame Leveling

8 degrees

##### Lift Speed (boom retracted)

Empty 105 f.p.m. (32 m/min)  
Loaded 95 f.p.m. (29 m/min)

##### Boom Speed

Extend 100 f.p.m. (30.5 m/min)  
Retract 105 f.p.m. (32 m/min)

##### Travel Speeds Forward and Reverse

2WD 0-19 mph (30.6 km/hr)  
4WD 0-6.5 mph (10.5 km/hr)

##### Drawbar Pull

Loaded 21,000 lbs. (9,524 kg)

##### Operating Weight

With 48" (1.2 m) carriage and forks,  
25,300 lbs. (11,474 kg)

#### Drive Line Specifications

##### Engine

Make and Model . . . Cummins B3.9C-116  
Turbo-charged, after-cooled

Fuel . . . . . No. 2 Diesel  
Cycles . . . . . 4  
No. of Cylinders . . . . . 4  
Displacement . . . . . 239 cu. in. (3.9 L)  
Rated Speed . . . . . 2500 rpm  
Max. Gross BHP . . . . . 116 HP (86.5 kw)  
Fuel Tank . . . . . 38 gal. (141 L)

##### Engine Filters

Two-stage dry air cleaner – centrifugal  
pre-cleaner with continuous dust ejector  
PLUS cleanable and replaceable dry filter  
element. Visual service indicator.

Replaceable spin-on fuel filter. Full-flow  
replaceable spin-on engine oil filter.

##### Electrical System

Voltage – 12V  
Alternator – 65 amp  
Battery – 810 Cold Cranking AMP at 0°F

##### Hydrostatic Drive

6300 PSI (43,407 kPa) closed loop with  
piston pump and motors.

All hydraulic connections ORS and Code  
62 O-ring flanges.

Integral reservoir with implement  
hydraulics.

8 micron suction filter for charge pump.

Self-contained, washplate design,  
variable displacement, over center, piston  
pump. Neutral start switch. (Park brake  
must also be engaged to start.)

2WD and 4WD inching.

2WD – 4WD switch on dash.

Forward, neutral, reverse lever on left  
of steering column.

Single foot pedal control provides both  
braking and inching for lifting while  
maneuvering vehicle.

Electro/hydraulic traction lock valve for  
superior tractive effort.

##### Axles

Planetary hubs with piston motors on  
rear axle.

Piston motor-driven planetary front axle  
with high-bias differential.

##### Brakes

Service - Hydraulic wet disc brake on  
each front wheel.

Hydraulic dynamic braking on front axle  
and both rear wheels.

##### Parking

Wet disc spring-applied electro/hydraulic  
release, fail-safe on both front wheels.

Light on dash indicates when brake is on.

##### Tires

14:00x24 - 12PR, G2 type.  
Optional: 17.5x25 - 12PR, L2 type on front.

##### Cab

Certified ROPS / FOPS structure with horn,  
back-up alarm and standard right side  
rear view mirror.

##### Steering

Hydraulic power steering with manual  
backup. Rear wheel steering, 90° pivot  
around either front tire. Outside turning  
radius is less than chassis length.

##### Instruments

Volt meter, hour meter, engine oil pressure,  
temperature, fuel gauge. All gauges  
protected by clear acrylic cover.

##### Controls

Grouped for operator comfort and  
convenience.

Boom lift and crowd on single joystick.

Right-hand tilt and sway lever.

Foot throttle.

Floor mounted traction lock switch.

##### Hydraulic System-Implement

Single-section gear pump.

40 gal. (151.4 L) system capacity.

8 micron filter with visual service indicator  
and suction strainer.

Lift, crowd, tilt and sway cylinders have safety  
checks to prevent dropping of load in the  
event of hose or other hydraulic failure.

#### Accessories & Options

##### Cab Enclosure

Lockable, split door, windshield wiper,  
heater & defroster fan.

##### Light Group

Consists of 2 cab-mounted headlights, 1  
backup/tail/stoptlight and rotating beacon.

##### Auxiliary Hydraulic Circuit

Required for all attachments equipped with  
cylinders or other hydraulic components.  
Consists of valves, controls, hydraulic lines.

##### Radial Tires

##### Winch

##### Left Hand Tilt / Sway Control

##### Tilt on Joystick

##### Rear Axle Stabilization

#### Attachments

##### Carriage

48" (1.2 m), 66" (1.7 m) & 72" (1.8 m)

##### Slope Pile Carriage

48" (1.2 m) and 66" (1.7 m)

##### 100° Swing Carriage

72" (1.8 m) Carriage

##### 180° Swing Carriage

72" (1.8 m)

##### 100° Drywall Swing Carriage

72" (1.8 m)

##### Pallet Forks

2" x 6" x 48" (50.8 mm x 152.4 mm x 1.2 m)

##### Cubing Forks

2" x 2" x 48" (50.8 mm x 50.8 mm x 1.2 m)

##### Vertical Mast

6' (1.8 m) with 48" (1.2 m)  
or 66" (1.7 m) Carriage

##### 100° Swing Mast

6' (1.8 m) with 48" (1.2 m)  
or 60" (1.5 m) Forks

##### Truss Boom With or Without Winch

10' (3.0 m)

##### Bucket

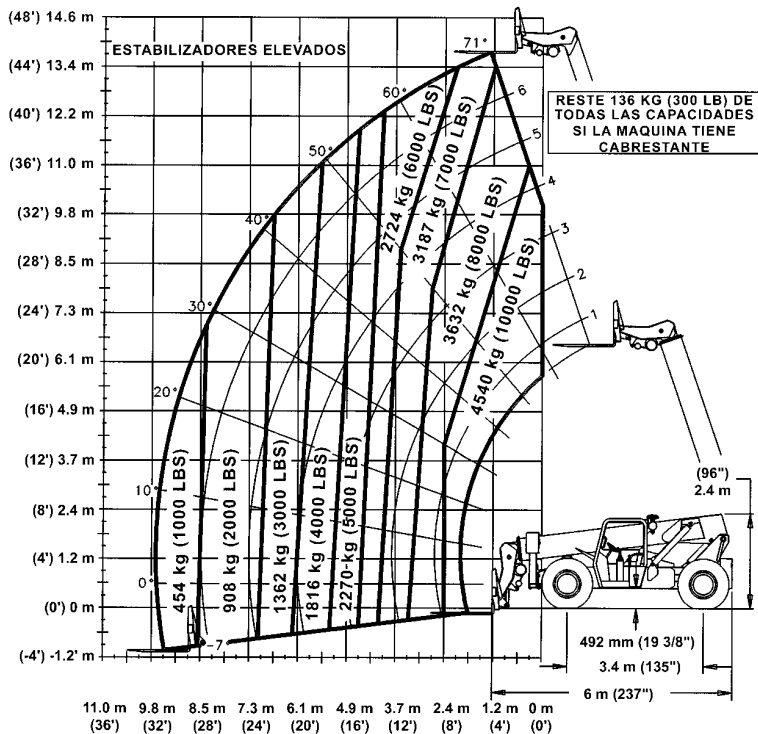
0.75 CY (0.57 m³) or 1.25 CY (0.95 m³)

##### Work Platform

##### Instant Hook

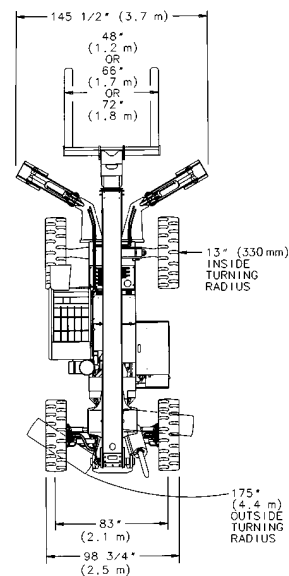
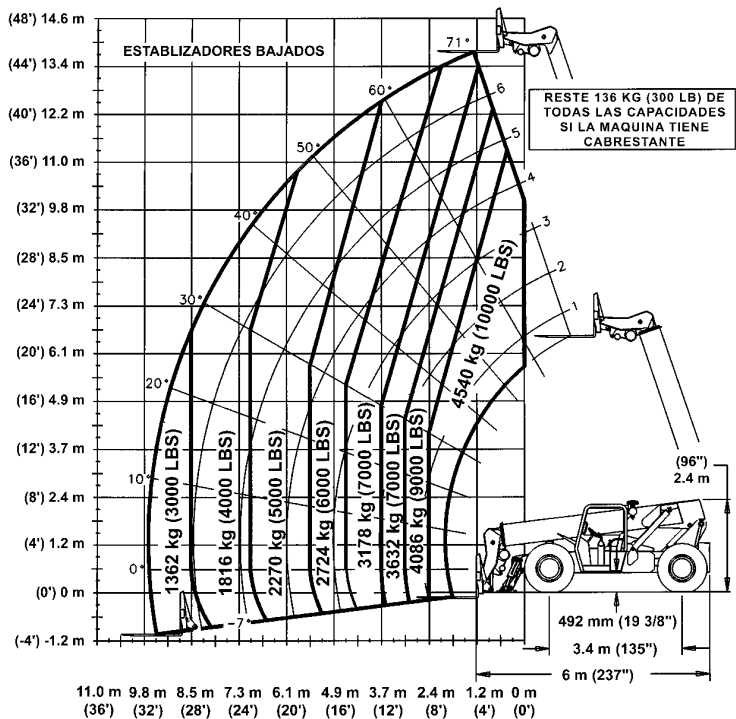
# 534D10-45

## MATERIAL HANDLER



**Max. Reach:**  
31.5 ft. (9.6 m)

**Max. Lift:**  
45 ft. (13.7 m)



### IMPORTANT

Rated lift capacities shown are with machine equipped with carriage and pallet forks and on a firm, level surface with undamaged, properly inflated tires. Machine specifications and stability are based on rated lift capacities at specific boom angles and boom lengths. If specifications are critical, the proposed application should be discussed with your dealer.

DO NOT exceed rated lift capacity loads, as unstable and dangerous machine conditions will result.

DO NOT tip the machine forward to determine the allowable load.

Use only Gradall approved attachments with the proper material handler model/attachment load capacity chart displayed in the operator's cab. OSHA requires all rough terrain forklift operators to be trained according to OSHA 29 CFR 1910.178 (l).

*This machine is designed to meet specifications of ASME B56.6b-1998. It is Gradall Policy to continually improve its products. Therefore, designs, materials and specifications are subject to change without notice and without incurring any liability on units already sold. Units shown may have optional equipment. See applicable specifications and price lists for optional equipment.*

**GRADALL®**  
A JLG COMPANY

The Gradall Company  
600 East Chestnut Street, Orrville, Ohio 44667  
Phone (330) 339-2211 FAX (330) 684-1029  
www.gradall.com