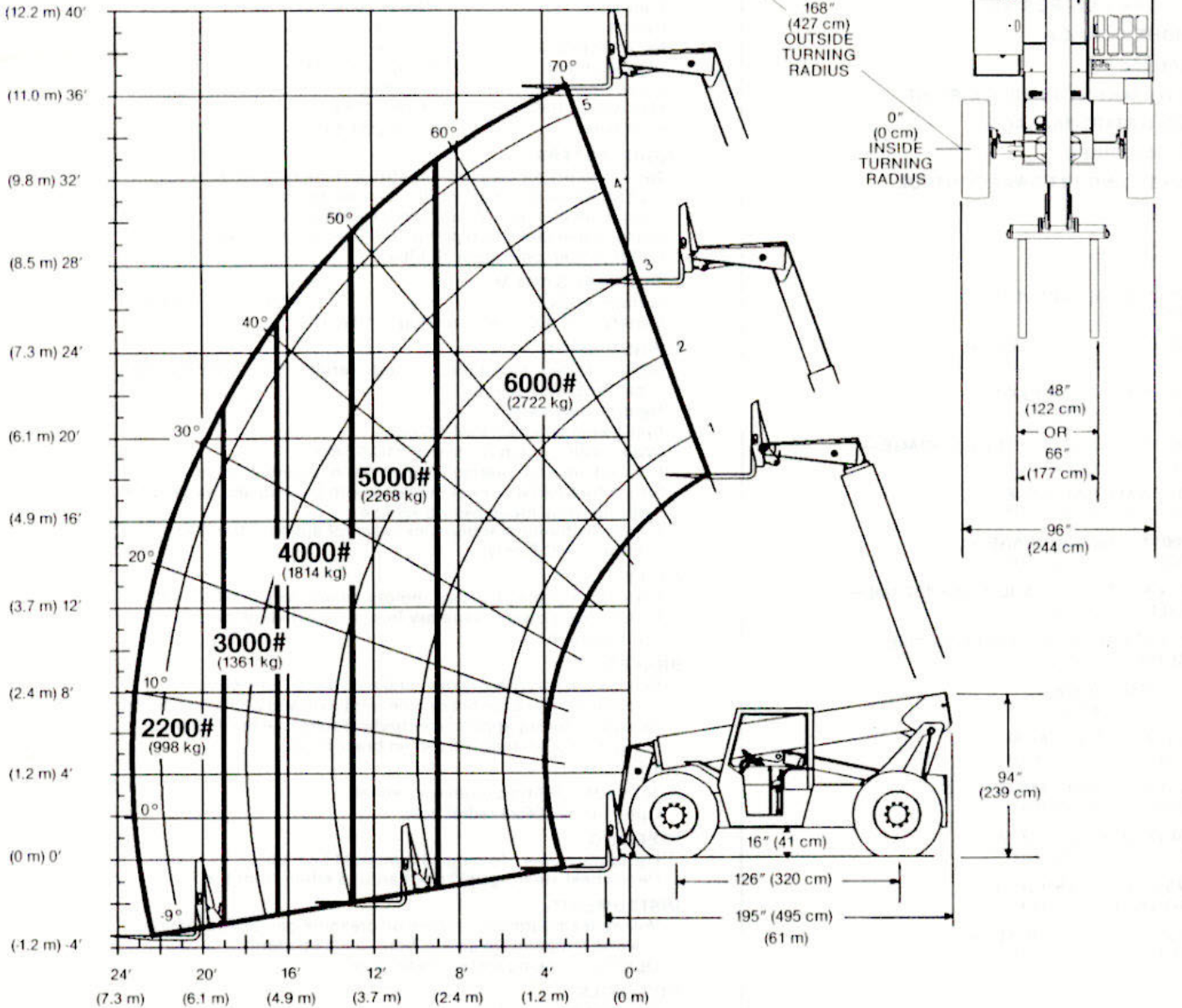


532C-6/534C-6

3-SECTION BOOM
TWO-WHEEL, FOUR-WHEEL DRIVE
ROUGH TERRAIN, PIVOT STEER
6,000 LB. (2722 kg.) MAX CAP.



	at 24" (610 mm)
Load Center	
Max. Lift Capacity	6,000 lbs. (2722 kg)
(Loaded)	100 f.p.m. (30.5m/min)
(Loaded)	130 f.p.m. (39.6m/min)
(Lo-Hi Gear)	7.5-16 MPH (12-25.7km/hr)

	w/48" (122 cm)
Carriage and Forks	17,830 lbs (8088 kg)
	(Loaded)
532C-6—	9,000 lbs (4082 kg) @ 1 MPH (1.6 km/hr)
534C-6—	12,800 lbs (5806 kg) @ 1 MPH (1.6 km/hr)

Rated lift capacities shown are with machine on a firm, level surface with undamaged, properly inflated tires. Machine specifications and stability are based on rated lift capacities at specific boom angles and boom lengths. If specifications are critical, the proposed application should be discussed with your dealer.

DO NOT exceed rated lift capacity loads, as unstable and dangerous machine conditions will result. DO NOT tip the machine forward to determine allowable load.

Handling personnel with the boom is not authorized.